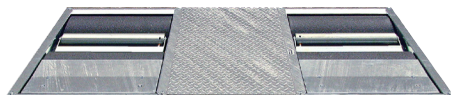


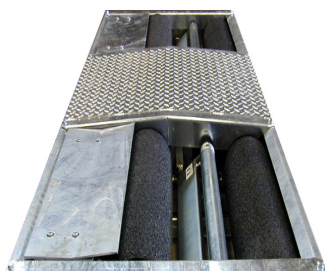
The **L60** is the modern **Escon** modular analogue/digital display for test lanes. Multiple configurations of floor units, peripherals and accessories can be connected to create a test lane for passenger cars and light commercial vehicles exactly adapted to the needs and possibilities in your workshop. The L60 is designed in such a way that all electronics are inside the read-out unit. Therefore, no separate relay boxes necessary!



## Combo®



(Standard for 4x4 testing)

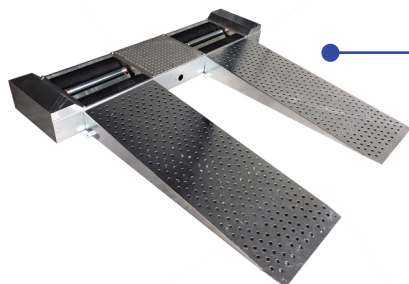
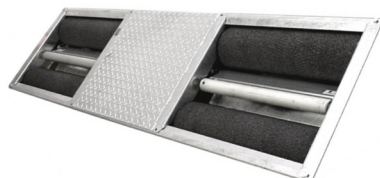


## Sideslip Meter



## Roller Brake Tester

(Standard for 4x4 testing)

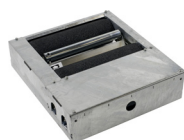


## L60

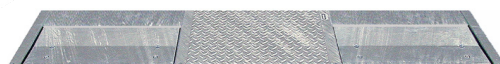


Display dimensions: 635 x 635 x 210 mm (W x H x D)

**Specifications  
and options at  
[www.escon-test.com](http://www.escon-test.com)**



## Suspension Analyser



## L60 standard features

- € Brake difference indication left/right per axle.
- € Digital sideslip- and suspension results for front- and rear axle.
- € Memory for storage of test results for service- and parking brake.
- € Wheel lock indication lamps for left and right.
- € Brake efficiency calculation for service- and parking brake after manual weight input, or automatic weighing with a suspension analyser or weighing system.
- € Recalling off all values and brake efficiencies.
- € Ovality & rolling resistance measurement.
- € Fully automatic test program.

## Standard supplied

- € Infra-red remote control hand set.
- € 4x4 reversible roller kit.
- € Wall bracket.



## Analogue display

Contains a large concentric 42cm diameter scale for the brake forces of the left and right wheel of an axle. The **RED** pointer represents the left wheel, the **BLUE** pointer represents the right wheel.

## Digital display

Contains a large digital LED display for a clear presentation of all numerical values for sideslip, suspension, brake forces, differences left/right and brake efficiencies.

## Also available: Network printing

The display is connected into the LAN. Print automatically via the LaneComm software after a test to any available network printer. Just press PRINT on the test lane remote control and the print is available at a remote PC and printer in for example the reception.



Technical specifications are subject to changes without notice.

Specifications of floor modules, console components and options, available upon request.

## Diagnostic equipment for specialists!



**Altus-Escon-Company B.V.**  
Drachmeweg 26  
NL-2153PA Nieuw-Vennep  
The Netherlands

**Certified: ISO 9001**  
www.escon-test.com  
sales@escon-test.com  
+31 (0)88 258 37 00