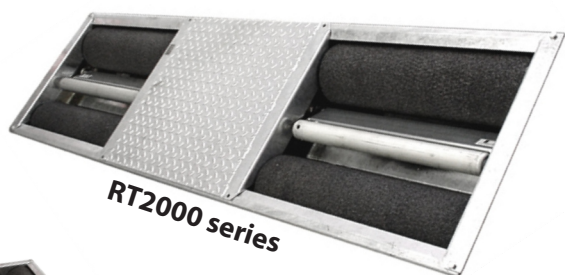
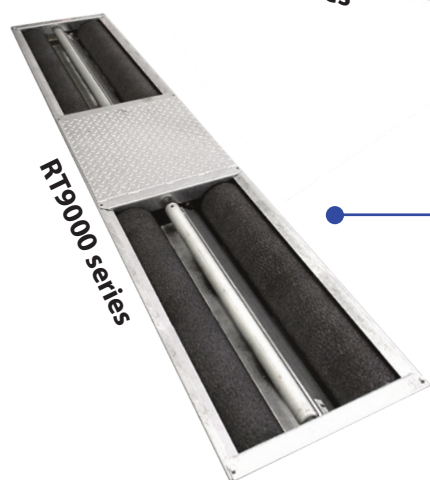


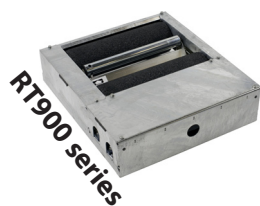
The **R50** is the **Escon** analogue display for roller brake testers. Multiple configurations of floor units, peripherals and accessories can be connected to create a test lane for passenger cars and light commercial vehicles exactly adapted to the needs and possibilities in your workshop. The R50 is designed in such a way that all electronics are inside the read-out unit. Therefore, no separate relay boxes necessary!



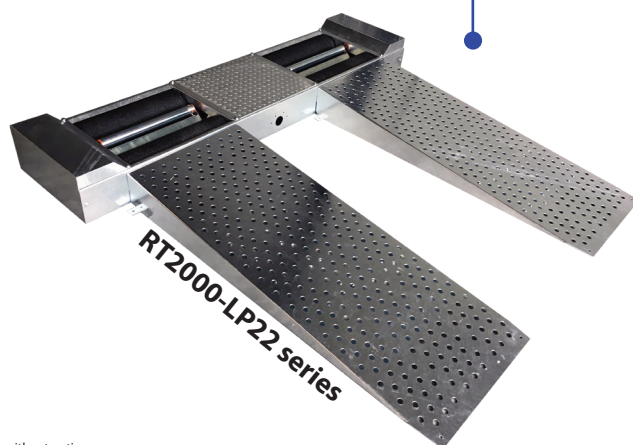
RT2000 series



RT9000 series



RT900 series



RT2000-LP22 series

R50 standard features

- € Brake difference indication left/right per axle.
- € Memory for storage of test results for service- and parking brake.
- € Wheel lock indication lamps for left and right.
- € Brake efficiency calculation for service- and parking brake after manual weight input or automatic calculation through an optional integrated weighing system.
- € Recalling off all values and brake efficiencies.
- € Ovality & rolling resistance measurement.
- € Fully automatic test program.

R50

(Standard for 4x4 testing)



Display dimensions: 635 x 465 x 165 mm (W x H x D)

Standard supplied

- € Infra-red remote control hand set.
- € 4x4 reversible roller kit.
- € Wall bracket.



Pointers (N)

Brake force scale for the left and right wheel. On the right scale the indication for manual weight input is presented.

Pointer (%)

For the presentation of differences left/right of an axle as well as brake efficiencies for the service brake and parking brake.

**Specifications
and options at
www.escon-test.com**

Technical specifications are subject to changes without notice.

Specifications of floor modules, console components and options, available upon request.

Altus-Escon-Company B.V.
Drachmeweg 26
NL-2153PA Nieuw-Vennep
The Netherlands

Certified: ISO 9001

www.escon-test.com
sales@escon-test.com
+31 (0)88 258 37 00

Diagnostic equipment for specialists!

