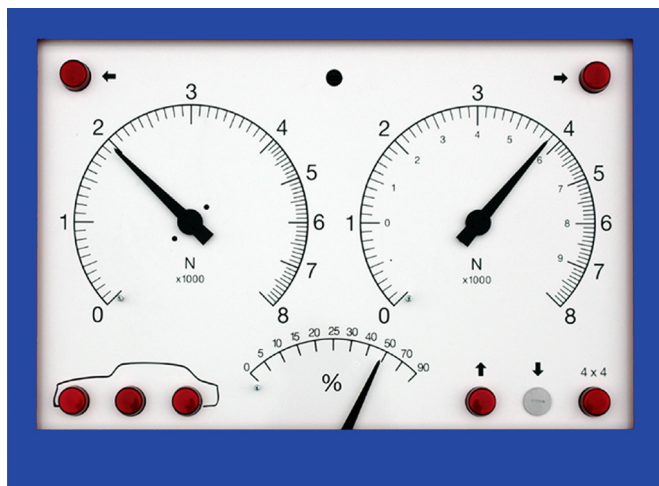


ESCON ROLLER BRAKE TESTER



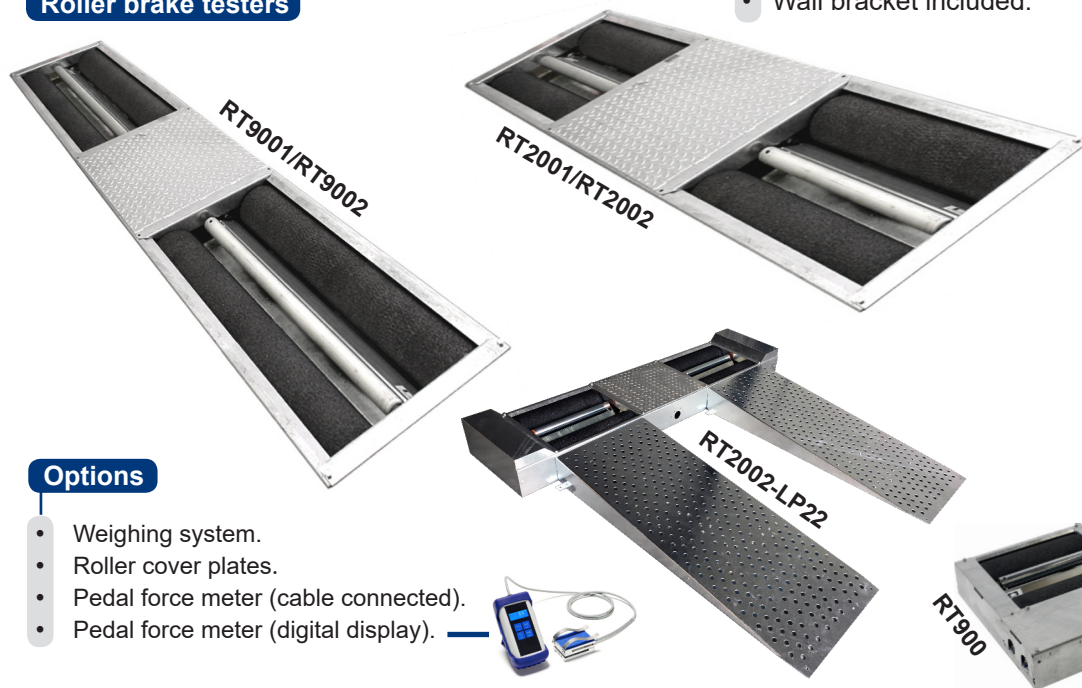
Dimensions display: 635 x 465 x 165 mm (WxHxD)

Multiple configurations of floor units, peripherals and accessories are possible to create an **ESCON Roller brake tester** for passenger cars and light commercial vehicles exactly adapted to the needs and possibilities in your workshop.

R50 Analogue Display

- Brake force indication left and right up to 8 kN.
- Brake force difference indication left / right.
- Full automatic test sequence.
- Microprocessor controlled.
- 4x4 reversible roller kit included.
- Wheel lock indication lamps left and right.
- Rolling resistance and ovality measurement.
- Brake efficiency calculation for service- and parking brake after manual weight input.
- Automatic brake efficiency calculation for service- and parking brake when optional weighing system is integrated.
- Memory for storage of test results for front-, rear- and parking brake with indicators.
- Infra red remote control for operation of all functions of the roller brake tester.
- Easy Exit® drive out of rollers included.
- Wall bracket included.

Roller brake testers



Display options

- Pivoting wall bracket.
- Pedestal & printer drawer.
- Printer.

Also available:



Options

- Weighing system.
- Roller cover plates.
- Pedal force meter (cable connected).
- Pedal force meter (digital display).



Specifications

		RT2001 / RT2002	RT9001 / RT9002	RT900	RT2001-LP22 / RT2002-LP22
• Measuring range	N	6000 / 8000	6000 / 8000	6000	6000 / 8000
• Axle load	ton	3 / 4	3 / 4	2,5	3 / 4
• Roller speed	km/h	2,5 / 5	2,5 / 5	2,6	2,5 / 5
• Roller dimensions	mm	206 x 700	206 x 900	180 x 600	206 x 700
• Track	mm	800-2200	880-2680	Variable	800-2200
• Construction	chassis	Single	Single	Dual	Single
• Motors	kW	2 x 2,2 / 2 x 5,5	2 x 2,2 / 2 x 5,5	2 x 2,2	2 x 2,2 / 2 x 5,5
• Dimensions	cm	234 x 66 x 30	281 x 71 x 32	88 x 78 x 21,5 (one side)	284 x 66 x 22

Power supply 3PH 400 V - 50Hz. Other voltages and frequencies available on request. All units are hot dip galvanised. Technical specifications are subject to changes without notice.

Escon R50 EN 20200401

ALTESCO, Altus-Escon-Company BV, Drachmeweg 26, NL-2153PA, Nieuw Vennepe, The Netherlands

Tel: +31 (0)88 ALTESCO, +31 (0)88 2583700, www.escon-test.com, info@escon-test.com

ESCON